



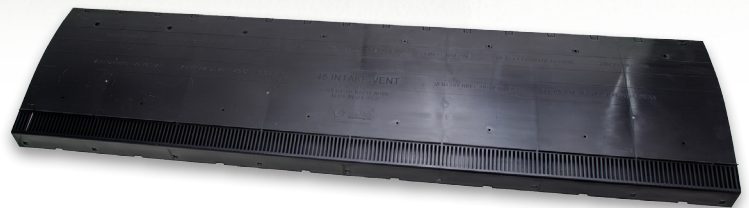
# ROSS<sup>®</sup>

Manufacturing, LLC

Innovation in Ventilation<sup>™</sup>

## Ross<sup>®</sup> 45 Intake Vent<sup>®</sup>

- Offers 45 Square Inches of Net Free Area per piece
- Closed External Baffle
- Patented Design with Internal and External Baffles
- Molded Nail Holes for Easy Installation
- Molded in Nail Line Indicators for Easy Installation
- Bag of 30 – 3" Roofing Nails attached to each piece of 45IV



## SPECIFICATIONS

**WIDTH:** 11 3/4"

**LENGTH:** 48"

**HEIGHT:** 1 1/8"

**NET FREE AREA (NFA):** 45 square inches

**VENT WEIGHT:** 2.68 lbs per piece

**PACKAGING:** 10 pcs/carton; 26.8 lbs/carton

### COMPOSITION & MATERIALS:

Injection-molded No Break Polypropylene

### CODE & STANDARDS:

U.S. Pat. No. 11,746,531

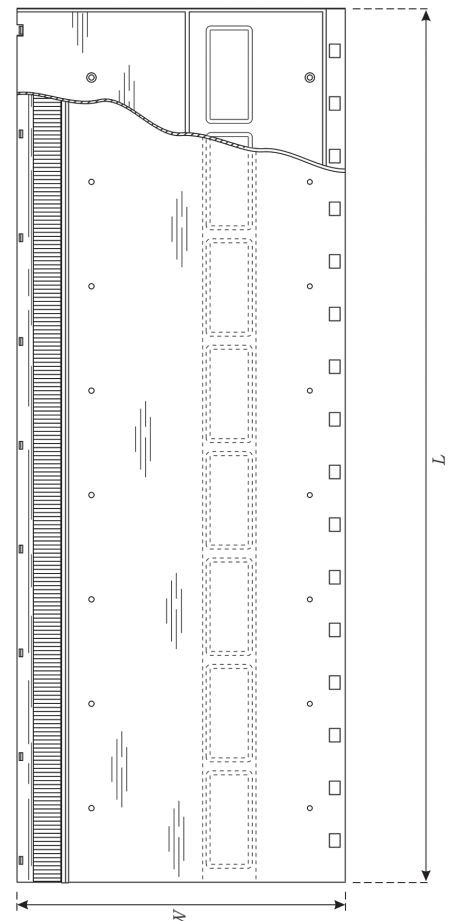
Texas Department of Insurance RV-131

Miami-Dade County NOA No.24-0731.02

WUI approved

*Screened & Filtered versions are also available*

**COLOR:** Black



*\*It is the contractors' responsibility to use the appropriate roofing underlayment for the region of install.*

website: [www.RossMfg.com](http://www.RossMfg.com) | email: [info@rossmfg.com](mailto:info@rossmfg.com) | tel: 832-247-0601 | fax: 830-643-0178