

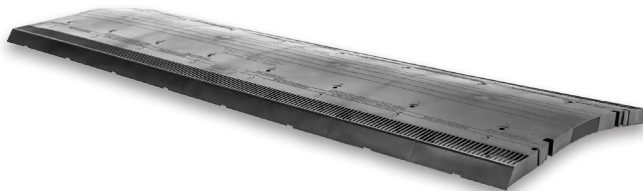


ROSS[®]
Manufacturing, LLC

Innovation in Ventilation[™]

Ross[®] 2-IN-1 Ridge Vent[®]

U.S. Pat. No. 7,662,037; U.S. Pat. No. 9,175,480; U.S. Pat. No. D694,394;
Canadian Pat. No. 2,776,653 and other foreign patents pending



INSTALLATION INSTRUCTIONS

Installation of the **Ross 2-IN-1 Ridge Vent** should comply with all local standards and regulations.

Before beginning a job, determine how much ventilation is required. The NFA (Net Free Area) of the eave/intake vents should be equal to or exceed (no greater than 60%) that of the **Ross 2-IN-1 Ridge Vent**. Improper balancing of the system could result in weather infiltration. If required, refer to the Ross Principles of Ventilation for guidance. The **Ross 2-IN-1 Ridge Vent** is designed for use on roof pitches ranging from 2/12 to 12/12.

IMPORTANT INFORMATION:

1. When using the **Ross 2-IN-1 Ridge Vent** with architectural shingles, caulk between low areas of shingle and external baffle, making sure you don't plug the weep holes. Cut any excess shingles and underlayment overlapping the hole. Ross does not warranty leaks from water penetrating under shingles or roofing underlayment.
2. Run the **Ross 2-IN-1 Ridge Vent** from end to end to give the roof a more attractive appearance.
3. For truss construction, cut a 1" slot on each side of the ridge starting a minimum of 12" from the rake edge of the roof. For roofs with a ridge pole cut a 1" slot on each side of the ridge pole starting a minimum of 12" from the rake edge of the roof.

12" CAP SHINGLE

1. Using a chalk line, mark 1" on both sides of the ridge (1" beyond ridge pole) as a guide for cutting a slot in the decking.
2. Cut slot using a circular saw with the blade set at a depth to cut through the decking only.
3. Center the **Ross 2-IN-1 Ridge Vent** over the opening that has been cut in the ridge, ensuring that the RV support pegs sit flat on the roof. To ensure proper alignment along the ridge, run a chalk line down both sides of the ridge.
4. Using the 3" x 0.120" diameter roofing nails provided, install the vent starting from the outer edge moving inward. Be sure to use the 12" nail holes to properly secure. For aesthetics, we recommend having the female end facing the edge of the roof.
5. As you install more pieces of the RV, ensure that each piece is joined together using the male/female connectors.
6. Cut the final piece to a length long enough so that it is flush with the edge of the roof. Ensure that the self-closed end cap is facing out to prevent weather infiltration. (Interlocking feature will not be used on the final piece.)
7. Install the cap shingles using the nails provided in the "shingle nail line" area for cap shingle installation as indicated on the **Ross 2-IN-1 Ridge Vent**.

10" & 9" CAP SHINGLE

Repeat steps 1-2 from 12" instructions.

3. The **Ross 2-IN-1 Ridge Vent** has a groove on the vent. Take a utility knife and score the length of the RV in the groove opposite of the cut/break line. For 10" application score one groove; for 9" application score both grooves. Once you have scored the underside, bend the external baffle at the groove and remove the external baffle. (One baffle for 10" and both baffles for 9").
4. Overlap the removed external baffle (one baffle for 10" and both baffles for 9") onto the body of the RV by simply inserting the 12" nail support into the 9" receiving nail hole.
5. Using the nails provided, install one side of the RV, starting from the outer edge moving inward, then bend the RV over the ridge and install the other side. If gaping occurs at the point where the external baffle meets the shingle, caulk between low areas of shingle and external baffle, making sure you don't plug the weep holes.

Repeat steps 5-7 from 12" Instruction.